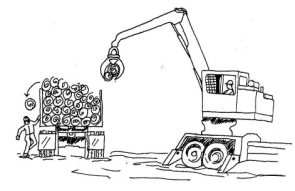


3UH LQLFH ODV UHY
 OD FDELQD GHO RSH
 \$VHJ~UHVH GH TXH
 FULWDOHV GH OD FE
 OLPSLRV \ FODURV
 YLGULRV FXDUWHDG
 \$VHJ~UHVH GH TXH
 WLHQH XQ FOD[RQ T
 5HYLVH OD SUHVHQFLD \ OHFWXUD
 VHJXULGDG
 /LPSLH HO SLVR GH OD FDELQD GH



VGH
 ORV
 UD

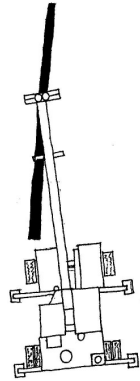
/DGLVSRVLFlyQ GHO GHVHPEDUTXH
 HVSDFLR SDUC
 PDQXDOPHQWF
 VXHOR GHO iU
 WUDEDMR TXH
 WRWDOHQWH
 FDUJDV VXVSH
 6t KD\ HVSDFL
 GHVHQHU OD RSHUDFLyQ GH FDUJD
 HFWHGRV HVV HQ HO iUHD GH FDU



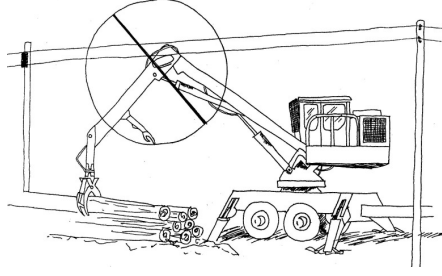
OPERACIÓN DE LA CARGADORA

8VWHG HO RSHUDGRU H
 VHJXULGDG 8VWHG HV U
 iUHD GH GHVFDUJD

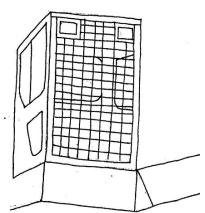
- 8VWHG GHEH GH WHQH
 DRV GH HGDG SDUD RS
 FDUJDGRUD
- 1XQFD RSHUH OD FDUJ
 LQIOXHQFLD GH GURJD
- \$VHJ~UHVH GH TXH OD
 WLHQH XQD JXDUGD G
 RSHUDGR
 DSUREDG
 VX OXJDU



YH SDU
 EOH GH
 RV
)MR OD
 KRO

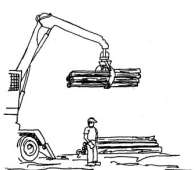


UD • (O FRQWDFWR GH OD FDUJDGRUD R V
 FLYQ GHO FFWULFDV FDXVDUI VHYHUDV OHVL
 • 1R RSHUH OD FDUJDGRUD GHQWUR G
 OtQHD GH HQUJtD HOPFWULFD GH W

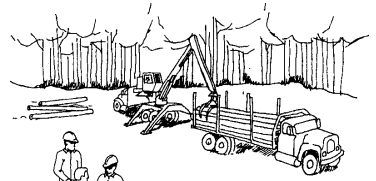


- 6LHPSUH LQFOLQH ORV VISITANTES RVV HQ HO
 ODGR RSXHVWR GH OD FDEDO SHUPLWD TXH ODV YLVLWDV HVS
- 6LHPSUH VXHQH HO FODR BXRVDIADV
 GH LQLFLDU OD RSHUDFLyQ SHUDQHDQ F
 FDUJDGRUD FHFUD GH FXDO
 RSHUDFLyQ D P
 TXH VHD VXSHI

Cargas sobre la cabeza
Los troncos o cargadoras que caen o balancean
pueden causar lesiones severas o la muerte.



- 1XQFD RSHUH OD FDUJDGRUD B ORV V Q
 WURQFRV FHUFD GH R VREJH
 SHUVRQDO
 ULHVJRV R SHO
- 0DQWHQJD D ORV FRQXCHV GH ORV VDGYHUWLGRV GH HVWR
 FDPLRQHV D XQD GLVWDSURWHFLyQ
 YLVLEOH PLHQWUDV VH FDUJD HO
 FDPLyQ



/D PD\RUtD GH
 FDEDO B ORV V Q
 FFWULFDV FDXVDUI VHYHUDV OHVL
 YLVLEOH PLHQWUDV VH FDUJD HO
 £6(\$ 352)(6,21\$/ ± 6(\$ 6(*852



6RXWKZLGH 6DIHW\ & RPPLWVHH
)RUHVW 5HVRXUFHV \$VVRFLDWLRQ ,QF
 3HQQV\OYDQLD D XS\WH 1:
 :DVKLQJ\WRQ

[ZZZ IRUHVWUHVVRXUFHV RUJ](#)
[ZZZ ORJLLQJVDIHW\ FRP](#)