

# FELLER BUNCHER SAFE OPERATION

## Safety for Woods Equipment Operators

an FRA Southwide Safety Committee Logging Safety Brochure

This brochure has been developed in accordance with existing OSHA requirements. However, recommendations are not to be construed as a substitute for compliance with applicable federal and state laws.

### SAFETY ALERT SYMBOL



**MEANS:**  
**ATTENTION! BE ALERT!**  
**YOUR SAFETY IS INVOLVED!**

THIS SAFETY SYMBOL IS USED FOR IMPORTANT SAFETY MESSAGES. WHEN YOU SEE THIS SYMBOL, FOLLOW THE SAFETY MESSAGE TO AVOID PERSONAL INJURY AND/OR PROPERTY DAMAGE.

#### UNDERSTAND SIGNAL WORDS

A signal word - DANGER, WARNING or CAUTION is used with the safety alert symbol.



**DANGER** identifies the hazard or unsafe practice that will result in severe personal injury or death.



**WARNING** identifies the hazard or unsafe practice that could result in severe personal injury or death.



**CAUTION** identifies the hazard or unsafe practice that could result in personal injury or property damage.

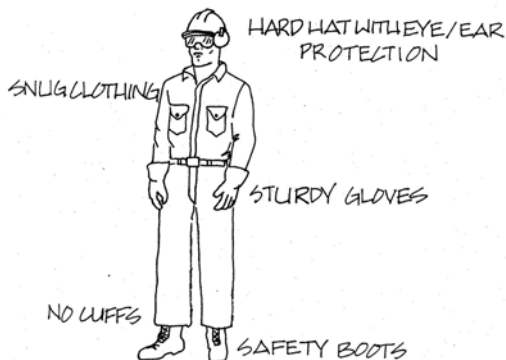
**NOTICE**

**NOTICE** identifies important installation, operation, or maintenance information.

### GENERAL SAFETY

P.P.E. = Personal Protective Equipment

**WEAR IT!**



Unsafe operation or maintenance can cause severe injury or death.

Do not operate or work on this machine without reading and understanding the Operator's Manual.

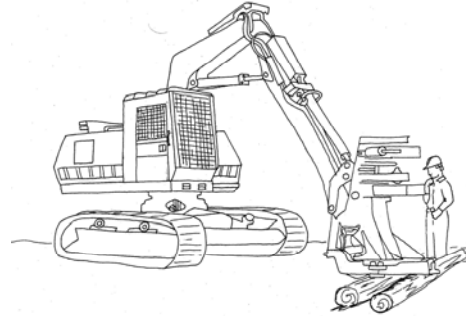


Only a trained, qualified operator shall be allowed to operate this machine.

Install a first aid kit and properly maintained fire extinguisher in the operator's cab.

### OPERATOR SAFETY TIPS

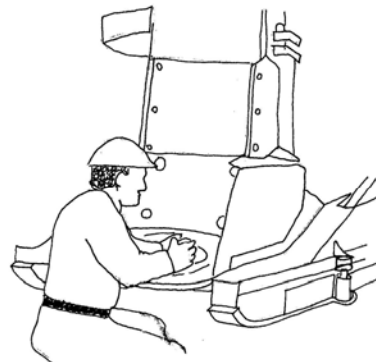
Be safe – be professional.



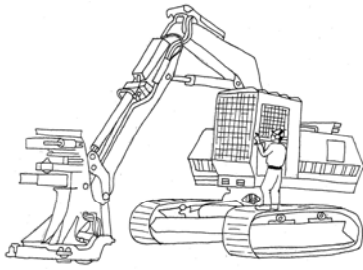
Perform a walk-around inspection of the unit at least twice a day.

- 1) Ground felling attachment when not operating.
- 2) Check shear blades for sharpness, alignment, and adjustment.
- 3) Check sawhead for loose hardware and broken or missing teeth.
- 4) Check accumulation pins for cracks/wear alignment.
- 5) Check disc sawheads for loose or damaged hardware and cracked, broken, or missing teeth.
- 6) Check bar sawheads for chain tension and bar alignment.
- 7) Check hoses/tubing for leaks, wear, and mounting.
- 8) Remove debris from accumulation areas: windows, belly pans, and attachments.

Service and maintain the unit according to manufacturer's instructions, including all guards, screens, and shields. Replace dull, damaged or loose saw teeth.



## MACHINE MOUNTING



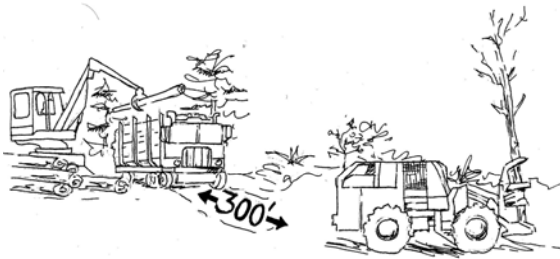
- 1) Remove mud, snow, ice, and debris from equipment mounting path.
- 2) Use 3-contact-point method to enter operator station (1 foot and 2 hands or 2 feet and 1 hand).

## PRE-START INSIDE CAB

- 1) Check visibility.
- 2) Remove debris and secure loose objects in cab.
- 3) Check fire suppression system.
- 4) Buckle up.
- 5) Check controls to assure proper operation.

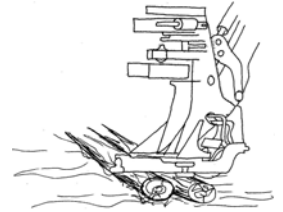
## FELLER BUNCHER OPERATOR GUIDELINES

- 1) Only trained operators should operate a feller buncher.
- 2) Never operate feller buncher while under influence of alcohol or drugs.
- 3) Familiarize yourself with the logging site before beginning the operation, noting timber distribution and size, ground conditions, terrain, and hazards.



- 4) Never operate any feller buncher/saw head within 300 feet of other equipment or personnel.

- 5) Work up and down slopes.
- 6) Exercise caution when operating on windy days.
- 7) Always ground or support attachments in safe position while not in operation or for maintenance.



- 8) Be aware of surroundings.

## OPERATIONAL SAFETY TIPS

Operate the unit within rated capacities and known limitations.

Always stump sawheads to stop them prior to returning to the deck or servicing the head.



## VISITORS

Never allow visitors, spectators, or unauthorized persons to be on or near any operation unless supervised.



Most visitors are not aware of hazards or dangers. They must be warned and wear proper protective equipment.

**BE PROFESSIONAL – BE SAFE**



Southwide Safety Committee  
Forest Resources Association Inc.  
B1QQ0YDQLD\$H1 Suite  
:DKL0RQ , &

[www.forestresources.org](http://www.forestresources.org)  
[www.loggingsafety.com](http://www.loggingsafety.com)